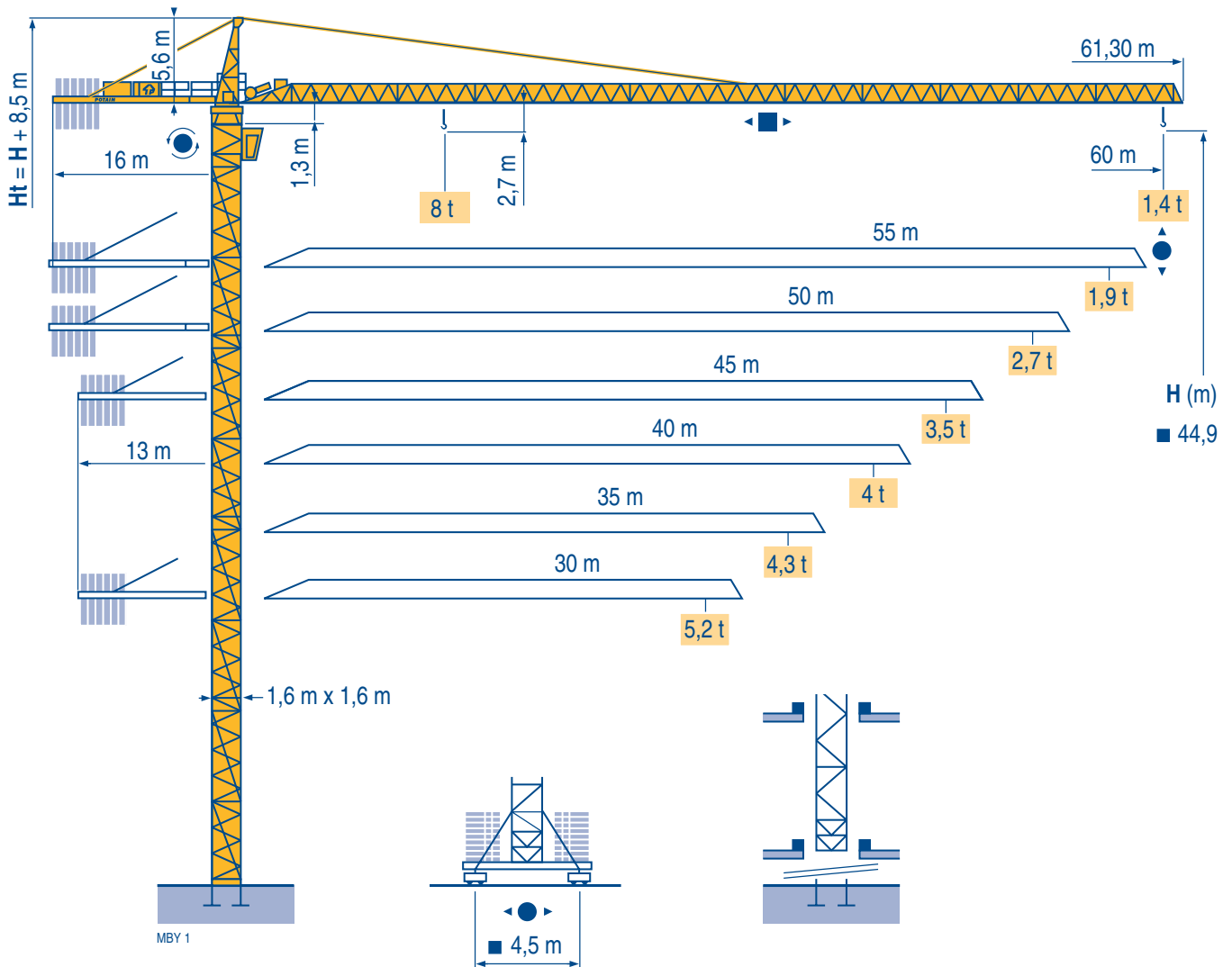


MC 175 B



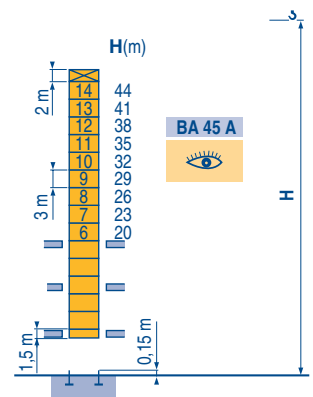
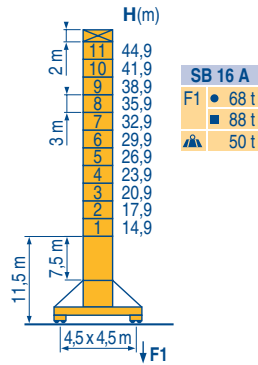
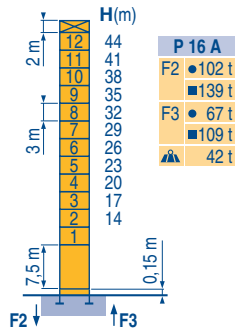
CITY CRANE

Masts / Reactions

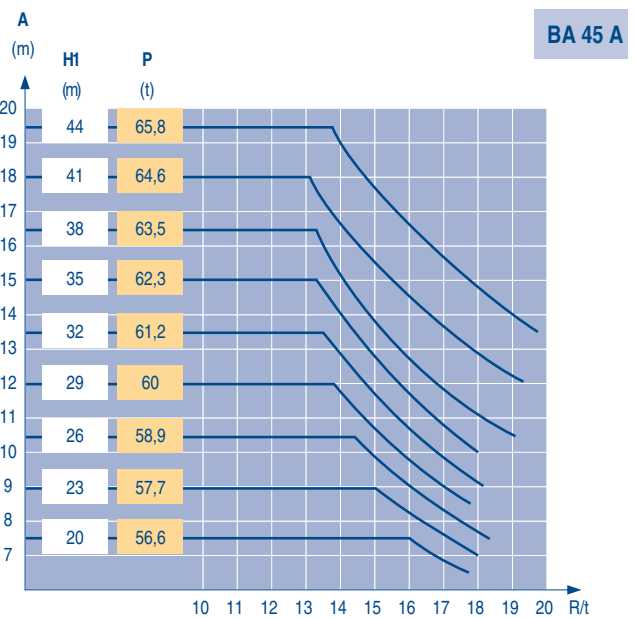
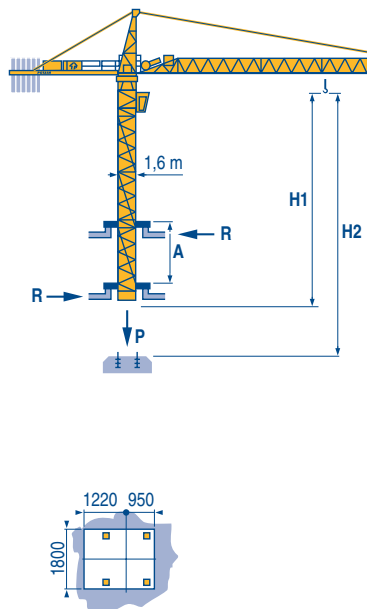
□ 1,6 m
 ▨ 30 m → 60 m

MBY 1



Climbing crane

MBY 1



CITY CRANE
 MC 175 B

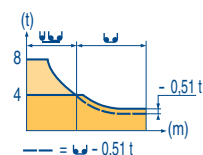
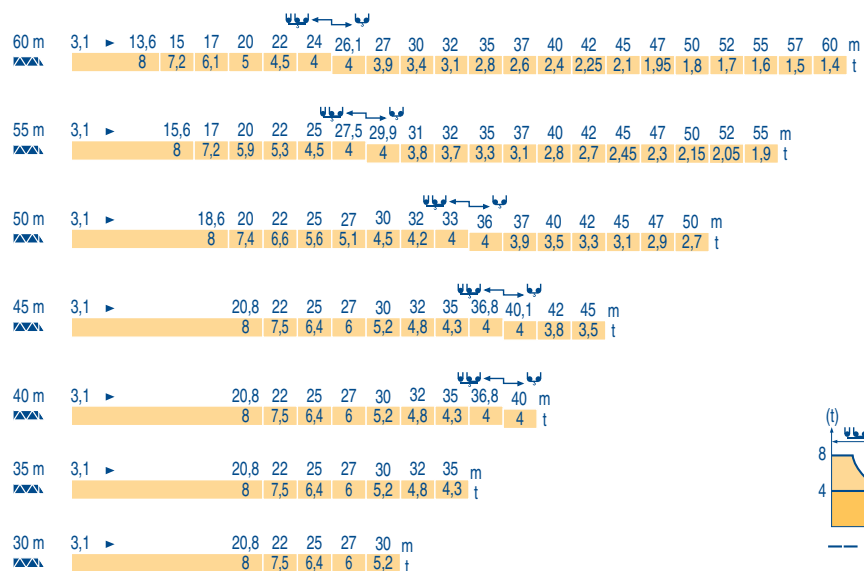


GB

- Reactions in service
- Reactions out of service
- ▲ Without load, ballast (or transport axles), with maximum jib and maximum height.
- 👁 See climbing crane

Load diagrams

MBY 1



Counter-jib ballast

MBY 1

		3450 kg	2250 kg	(kg)
60 m	16 m	4	2	18 300
55 m	16 m	3	3	17 100
50 m	16 m	3	2	14 850
45 m	13 m	5	1	19 500
40 m	13 m	4	2	18 300
35 m	13 m	3	3	17 100
30 m	13 m	3	2	14 850

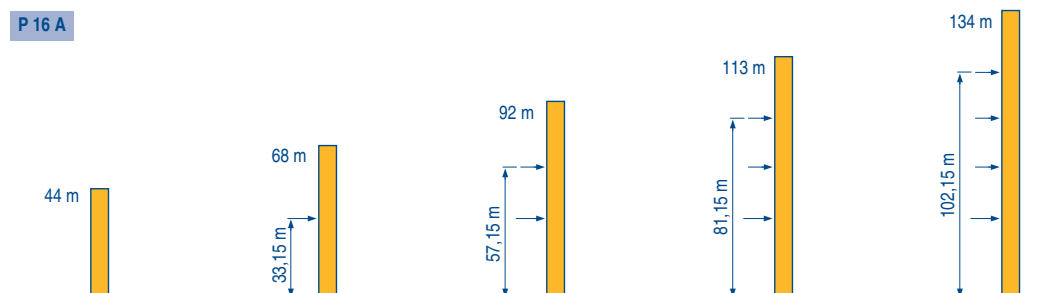
Base ballast

MBY 1

1,6 m	SB 16 A	H (m)	44,9	41,9	38,9	35,9	32,9	29,9	26,9	23,9	20,9	17,9	14,9
		(t)	72	60	54	54	54	54	54	54	54	54	54

Anchorage

MBY 1



CITY CRANE MC 175 B










POTAIN

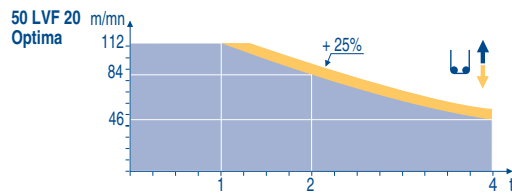
GB




- A** Distance between collars
- H1** Crane height
- P** Crane weight (in service)
- R** Horizontal reaction


Mechanisms

MBY 1

				0 → 40		0 → 80		0 → 20		0 → 40		hp	kW														
	45 RCS 20	m/min	0	→	40	0	→	80	0	→	20	0	→	40	45	33	329 m										
		t	4			2			8			4															
	5 D3 V4	m/min	15 - 30 - 58										5	3,7													
	50 LVF 20 Optima	m/min	3,8	→	14,8	→	46	→	58	→	84	→	112	1,9	→	7,4	→	23	→	29	→	42	→	56	50	37	363 m
		t	4		4		4		3		2		1	8		8		8		6		4		2			
	6 DVF 4	m/min	0 - 6 → 76										5,5	4													
	RCV 145	rpm	0 → 0,8										2 x 6	2 x 4,4													
	SB 16 A RT 324 R ≥ 10 m	m/min	12,5 - 25										2 x 7	2 x 5,2													
CEI 38 		IEC 38		kVA																							
400 V (+6% -10%) 50 Hz		45 RCS : 60 kVA 50 LVF : 70 kVA				2000/14																					



-  **GB** Hoisting
-  Trolleying
-  Slewing
-  Travelling
-  In compliance with the EEC Instructions on noise level

 This commercial document is not legally binding. For any technical information, please refer to the corresponding instructions.



Manitowoc Crane Group Asia Pte Ltd
 Maniowoc Crane Group
 26 Benoi Road
 Singapore 629898
 Tel: 65-6861 7133
 Fax: (Admin/ Sales) : 65-6862 4040
 Fax: (Service/ Parts) : 65-6862 4142
 www.manitowoccrane.com

Americas
 Tel: +1 920 683 6322
 Tel: +1 717 597 8121

Europe - Middle East - Africa
 Tel : +(33) 4 72 81 50 00
 Tel : +(44) 191 565 6281

Asia - Pacific
 Tel: +(65) 6861 7133
 Fax: +(65) 6862 4142

www.manitowoccrane.com

CITY CRANE MC 175 B

Réf. 2004 45 MBY 1

Copyright.Reproduction interdite © POTAIN 2004

Réalisation Sedoc