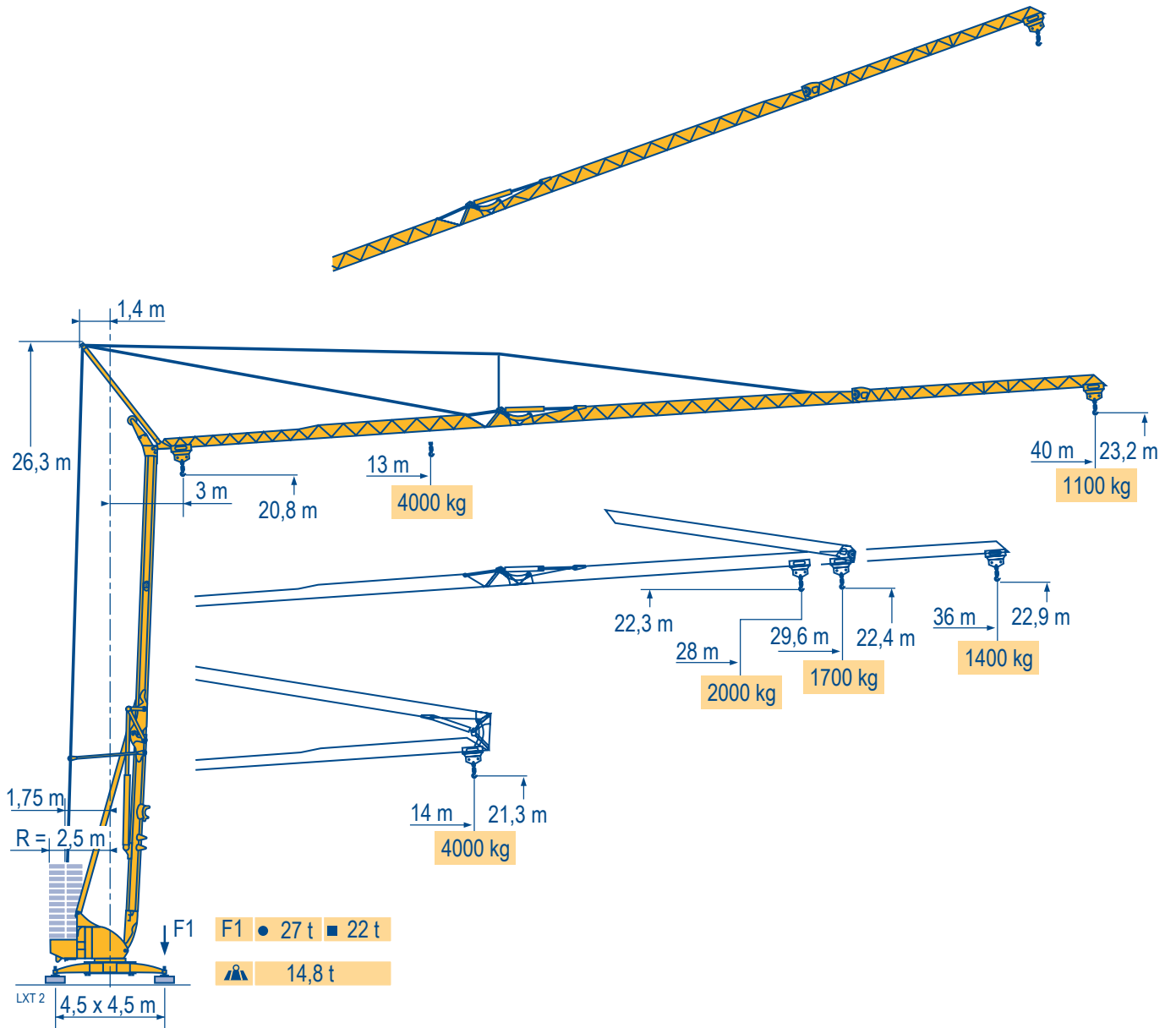


# POTAIN

## Igo 50



Courbes de charges  
Lastkurven

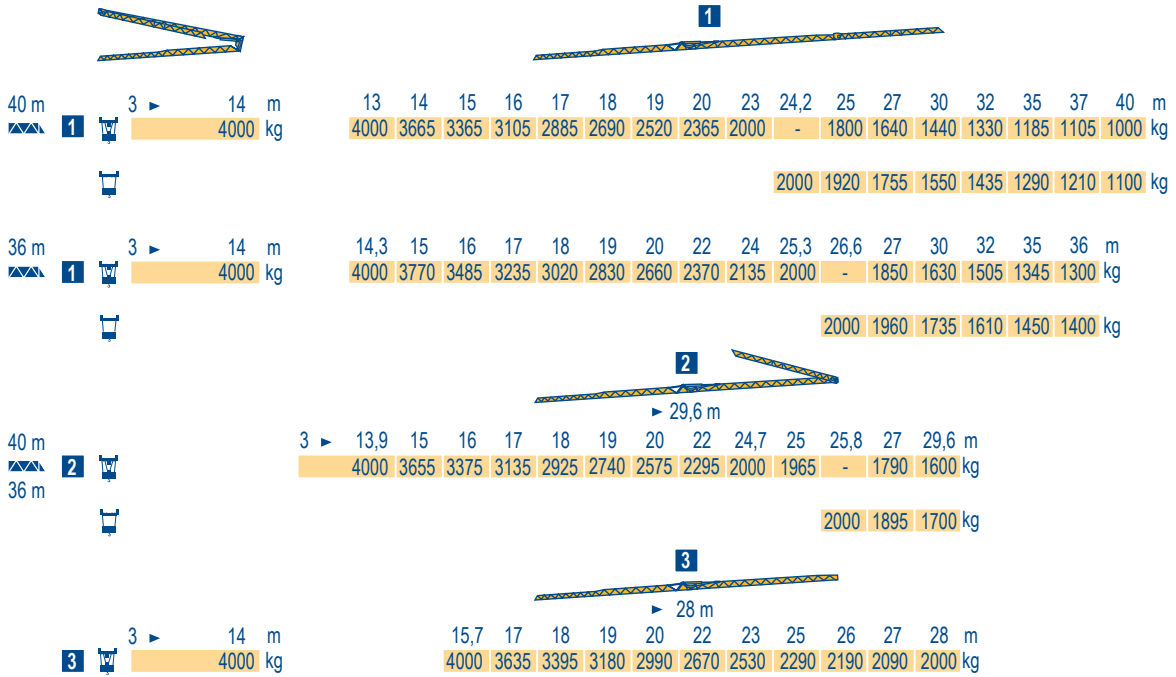
Load diagrams

Curvas de cargas

Curve di carico

Curva de cargas

LXT 2



Flèche relevée

Ausleger in Steilstellung

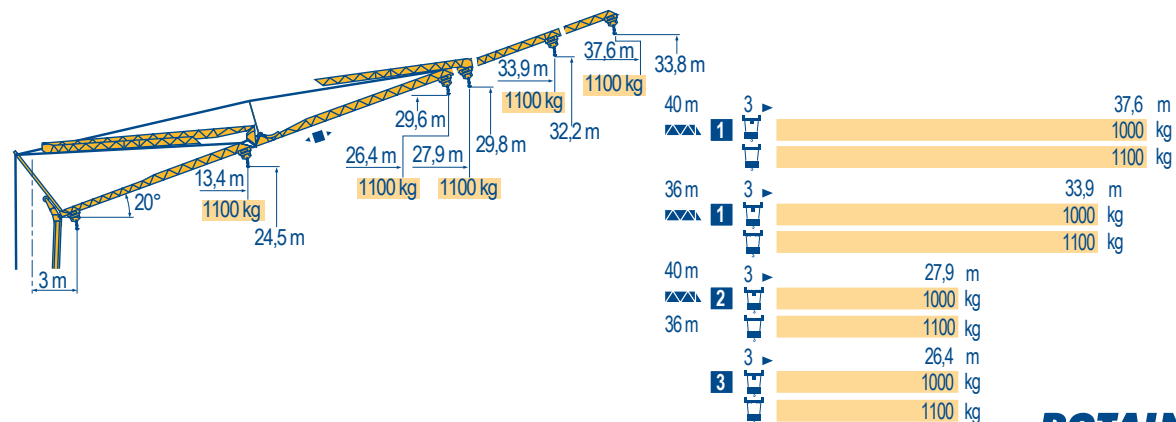
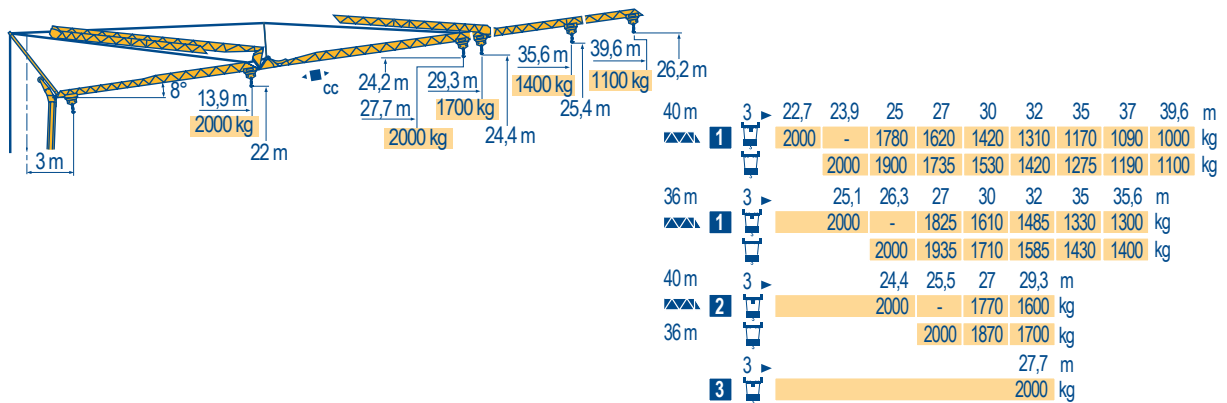
Luffing jib

Flecha izada

Braccio impugnato

Lança inclinada

LXT 2








Igo 50



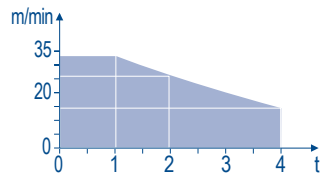
F	D	GB	E	I	P
Chariot distributeur	Verfahrbare Laufkatze	Traversing trolley	Carro distribuidor	Carrellino distributore	Carro distribuidor
Chariot distributeur et courbes de charges	Verfahrbare Laufkatze und Lastkurven	Traversing trolley and load diagrams	Carro distribuidor y curvas de cargas	Carrellino distributore e curve di carico	Carro distribuidor e curva de cargas
● Réactions en service	● Reaktionskräfte in Betrieb	● Reactions in service	● Reacciones en servicio	● Reazioni in servizio	● Reações em serviço
■ Réactions hors service	■ Reaktionskräfte außer Betrieb	■ Reactions out of service	■ Reacciones fuera de servicio	■ Reazioni fuori servizio	■ Reações fora de serviço
A vide sans lest (ni train de transport) avec flèche et hauteur maximum.	Ohne Last, Ballast (und Transportachse), mit Maximalausleger und Maximalhöhe.	Without load, ballast (or transport axes), with maximum jib and maximum height.	Sin carga, sin lastre, (ni tren de transporte), flecha y altura máxima.	A vuoto, senza zavorra (ne assali di trasporto) con braccio massimo e altezza massima.	Sem carga (nem trem de transporte)- sem lastro com lança e altura máximas.

Mécanismes  
Antriebe  
Mechanisms  
Mecanismos  
Meccanismi  
Mecanismos

LXT 3

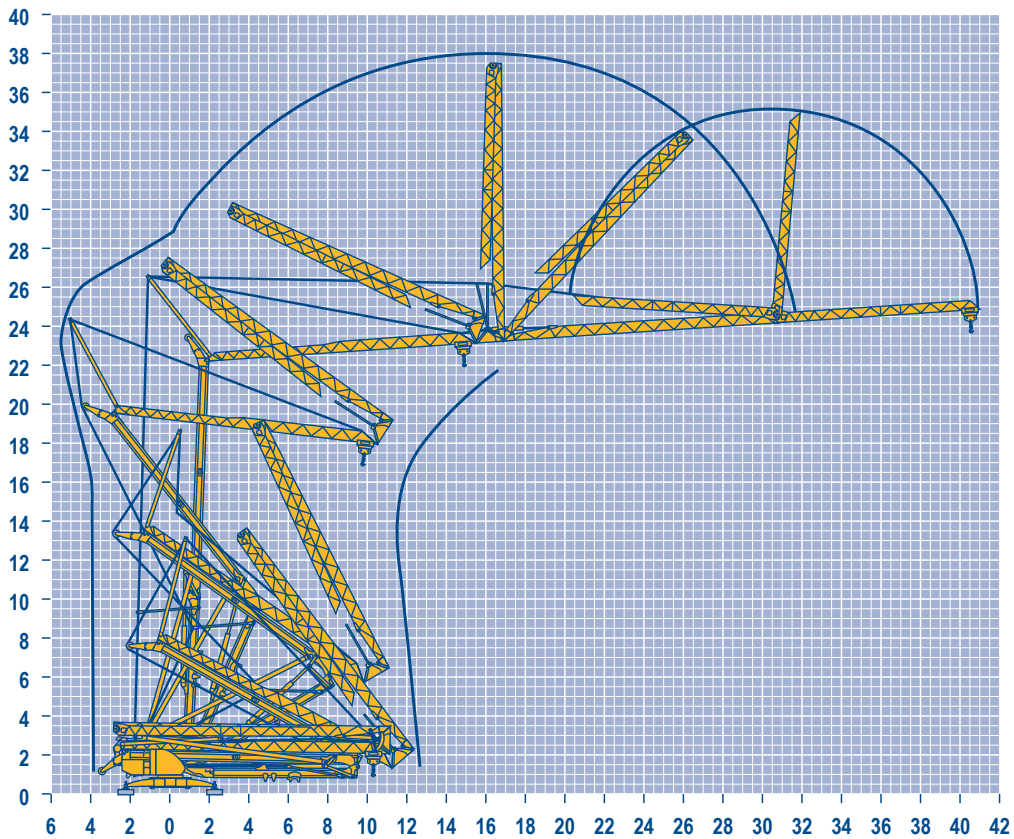
												ch - PS hp	kW	
	15 LVF 10 Optima	m/min	3,6	18	30	49	66						15	11
		kg	2000	2000	2000	1100	500							
	3 DVF5	m/min	19 - 45 (0 → 1000 kg) - 19 - 41 (1000 → 4000 kg)									3	2,2	
		tr/min U/min rpm	0 → 0,8									5,5	4	
		CEI 38 	IEC 38				kVA							
		400 V (+6% -10%) 50 Hz				15 LVF 10 : 23 kVA								

15 LVF 10  
Optima



Montage  
Montage  
Erection  
Montaje  
Montaggio  
Montagem

LXT 1



Igo 50

**POTAIN** 



**F**

Levage  
Distribution  
Orientation

**D**

Heben  
Katzfahren  
Schwenken

**GB**

Hoisting  
Trolleying  
Slewing

**E**

Elevación  
Distribución  
Orientación

**I**

Sollevamento  
Distribuzione  
Rotazione

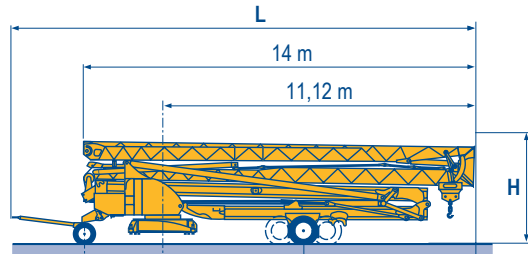
**P**

Elevação  
Distribuição  
Rotação

Transport  
 Transport  
 Transport  
 Transporte  
 Transporte

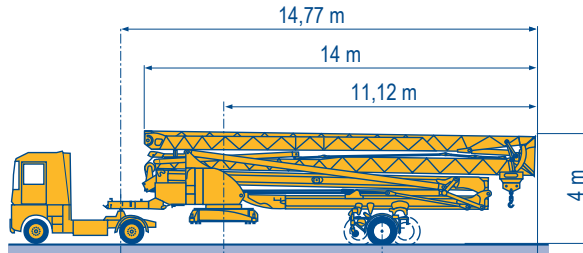
- DJ100/S120 ○
- DJ105/S125
- DJ126M/S125
- DJ126M/S215M

LXT 4



				H	L
DJ100/S120	2,75 m	5,25 m	5,87 m	3,57 m	16,39 m
DJ105/S125	2,75 m	5,25 m	5,87 m	3,57 m	16,39 m
DJ126M/S125	2,75 m	5,25 m	5,87 m	3,57 m	16,96 m
DJ126M/S215M	3,55 m	4,93 m	6,19 m	4 m	17,75 m

- SL122/J215M
- SL121/J135
- SL121/S215M



SL122/J215M	3,65 m	4,93 m	6,19 m
SL121/J135	3,65 m	5,88 m	5,24 m
SL121/S215M	3,65 m	4,93 m	6,19 m

- **F**  
Chantier
- D**  
Baustelle
- GB**  
Site
- E**  
Obra
- I**  
Cantiere
- P**  
Estaleiro



Document commercial non contractuel. Pour toute information technique se référer à la notice correspondante.

Unverbindliches Vertriebsdokument. Für technische Informationen, siehe die entsprechenden Anweisungen.

This commercial document is not legally binding. For any technical information, please refer to the corresponding instructions.

Documento comercial non contractuel. Para cualquier información técnica, ver la noticia correspondiente.

Documento commerciale non vincolante, per tutte le informazioni tecniche fare riferimento al catalogo istruzioni.

Documento comercial não contratual. Para qualquer informação técnica complementar consultar as respectivas instruções.



18, rue de Charbonnières - B.R.173  
 69132 ECULLY Cedex - France

Tél. : +33 (0) 4 72 18 20 20  
 Fax. : +33 (0) 4 72 18 20 00  
 www.manitowoccrane.com



**Americas**  
 Tel : +1 888 479 7278  
 Tel : +1 717 593 2000

**Europe - Middle East - Africa**  
 Tel : +33 (0) 4 72 81 50 00  
 Tel : +44 (0) 191 522 2000

**Asia - Pacific**  
 Tel : +65 6264 1188  
 Fax : +65 6862 4040

www.manitowoccrane.com

**Igo 50**

Code Z-91985-50\_Réf. 2003 48 LXT 6

Copyright.Reproduction interdite © POTAIN 2003

Réalisation Secloc